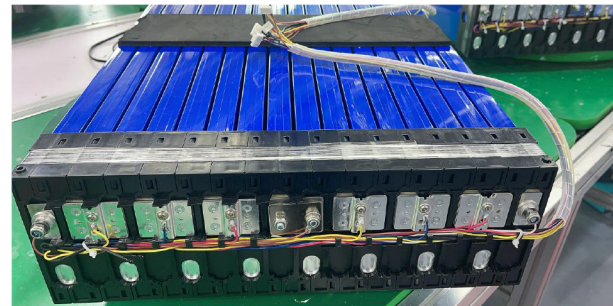


PRODUCT SPECIFICATION

Product Model :	DEL16S1P51.2V200Ah
Product Description :	LiFePo4 Battery Pack
Specification NO. :	16S1P/51.2V200Ah-01-A
Date:	15/12/2022

1. Basic Spec	
Model	DL51.2V200Ah
Single cell voltage	3.2V
L×W×H	690mm*590mm*210mm
Nominal Voltage	51.2V
Nominal Capacity	200Ah
Internal Resistance	≤ 220mΩ
End of charge Voltage	58.4V
End of charge Current	100mA
End of discharge Voltage	38V
Charge Method	0.2C (0.5A) CC/CV
BMS	16S 200A
Communication	RS485/RS232/Canbus
Max.Continuous charge current	100A
Nominal Discharge Current	200A(safe)
Max. Pluse Discharge Current	250A/6S
Weight	≤ 85Kg
Operating Temp.	Charge 0~45°C
	Discharge -10~55°C
Storage Temp. (60-80% SOC Storage)	-10~45°C
Capacity@1C rate 0.2C	≥200Ah
Cycle Life	6000 Cycle Times 85% DOD 8000 Cycle Times 65% DOD

Picture:



Battery case only for reference.

We will customize for you as your requirements.